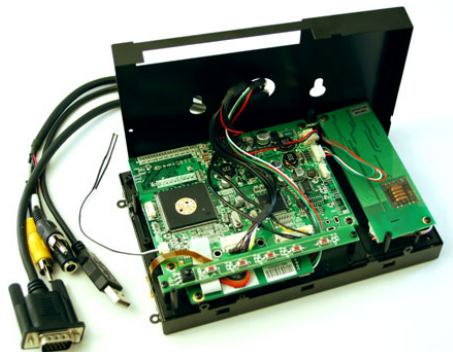




269.00 EUR

incl. 19% VAT, plus shipping

- **Open-Frame !**
- **Auto Power On !**
- **Auto-Dimmer !**



Support:  [Dimensions](#) | [800x480 Driver \(Windows 7\)](#)

New : LED-Backlight-Technology, with optimized color saturation enabling particular high and shining display. The scale of displayable color nuances is increased by 45% because of the new technology. Conventional LCDs are based on CCFL backlight, which can display approx. 72% of the standard color scale of NTSC (National Television Systems Committee). With LED-Backlight-Technology 104% of the NTSC-color scale can be displayed. This results in displaying in a highly realistic manner.

With the new Open-Frame TFT display-series from CarTFT you get back control : The ruggedized metal frame enables you a stable installation. The single modules (Mainboard, Touchscreen controller, Power inverter and button-frame) can be screwed off from the rear side and being positioned elsewhere. This way you can install the connector cables more easier and the display thickness shrinks also.

Note : This Open-Frame TFT display is an offer primarily meant for business and project customers. End consumers should only handle with unprotected electronic parts with appropriate experience.

Possible additional options (starting from a MOQ of 20 units):

- Speakers
- Different cable lengths
- Other display models/sizes
- Touchscreen RS232 instead of USB
- Other connector types
- [...] Ask us !

Additional informations :

With the touchscreen functionality you easily can control your PC. The brilliant VGA-display ensures a maximum readability and sharpness.

AC-Adapter for home usage and a car cigarette lighter adapter is included.

The CTF-400 can be used with any PC/MAC with VGA- and USB port.

Driver-CD included, compatible with :

- Windows 95/98/ME/NT4/2000/XP/7/8/8.1/10
- XP Tablet PC Edition
- Windows CE 2.12, 3.0, .net
- Linux RedHat,Mandrake,..
- Macintosh OS 9.x, 10.x
- DOS,..

Spezifications

<i>Screen size</i>	7" digital
<i>Aspect Ratio</i>	16:9 wide TFT screen
<i>Dot Resolution</i>	2400x480= 1,152,000 dots
<i>Physical Resolution</i>	800x480
<i>Supported Resolutions</i>	640x480-1024x768
<i>Color configuration</i>	RGB stripe
<i>Brightness</i>	500 nits
<i>Contrast</i>	500:1
<i>Operating temperature</i>	-30°C to 85°C
<i>Power input</i>	DC 9-30V
<i>Power consumption</i>	max. 8W
<i>Video system</i>	2x Video inputs (PAL/NTSC) 1x VGA input
<i>Dimensions</i>	167 x 105.5 x 32.1 mm Display : 155 x 88 mm
<i>Video input signal</i>	1.0Vp-p, composite video
<i>Features</i>	Full function OSD control (english) Auto-Dimmer Auto Power On/Off Autodimmer

What is included ?

- 7" VGA Open-Frame Touchscreen TFT with Video-support
- Power Adapter f. EU 230V
- Cigarette Lighter Adapter
- Touchscreen Driver-CD
- Manual

Displays with [True-800x480-Support](#) achieve a pixel accurate view at 800x480@70Hz

